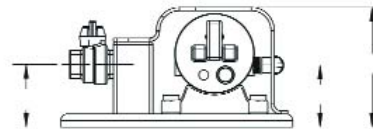
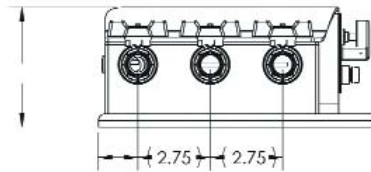
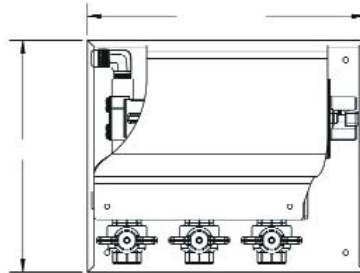


Reverso has been the premier maker of oil change systems for over 20 years.

Installed as standard equipment by a majority of boat builders

- **Reversible**
- **Self-priming**
- **Chrome plated brass head**
- **Built-in switch guard**
- **Easily changed impeller**
- **“CE” certified**
- **Valve Options 3-6**



Impellers & Gaskets	
360010	Impeller(Nitrile) use for oil or water transfer
360014	Impeller (Viton) use for diesel fuel transfer
360120	Gasket for OP-6

Repair Kits-Contains:	Sets composed of impeller + gasket
SRK-360	1 Oil/water set
SRK-370	1 Diesel/oil set

Rebuild Kits-Contains:	Impeller, gasket + seals
SRK-361	1 Oil/water set and seal
SRK-371	1 Diesel/oil set and seal

Assorted Parts for OP-6	
360060	Cover Plate for OP- 6
360070	Brass Cam for OP- 6
36015	Fuse (15amp slow burn)
360002	Pump Head Assembly
36003	Three Way Toggle Switch (on-off-on)

Model	Width	-	Height	-	Length
OP-703 valve	4.625"	x	8.875"	x	10.625"
OP-704 valve	4.625"	x	8.875"	x	11.625"
OP-705 valve	4.625"	x	8.875"	x	14.250"
OP-706 valve	4.625"	x	8.875"	x	16.250"

Technical Specification	
Pump Port	1/2" Flare
Manifold Ports	1/2" Female NPT
Amp (load 20 PSI)	7.0 A@12v 2.9 A@24v
Flow Rate	3.0 Gallons/Minute
Self priming	3 feet
Lift	20 feet
Pump body	Nickel Brass
Impeller	Nitrile (Stand.) Viton (opt.)
Working Press	0 to 15 PSI
Seal	Nitrile Rubber
Motor	DC 12 or 24v

• **Motor Speed:** (*L/H) Low/High. • **Base Option:** (*S) On-Off/ (*R) Reversing/ (*M) Momentary