



# OBERDORFER

## THERMOPLASTIC SELF PRIMING CENTRIFUGAL PUMPS

**MODELS**  
90P 93P  
91P

**PEDESTAL DRIVE - PIPE SIZE: 90P, 91P 2"**  
**93P 3"**



See model 900 for close coupled electric motor drive.  
See models 900G, 910G, 930G, 940G for close coupled gas engine drive.

### APPLICATIONS

INDUSTRIAL - CHEMICAL - AGRICULTURE  
MARINE - CONTRACTOR - UTILITY

- n General Water Supply
- n Emergency Stand-by
- n Lawn Sprinkling
- n Pumping from Underground Tanks
- n Industrial Sump Drainage
- n Recirculation of Process Liquids
- n Dewatering of Ditches, Cellars, Ponds
- n Washing Down Barns or Equipment
- n Irrigation - Flood Furrow or Sprinkler
- n Pumping Cess Pools

TEMPERATURE RANGE: -20°F to 130°F

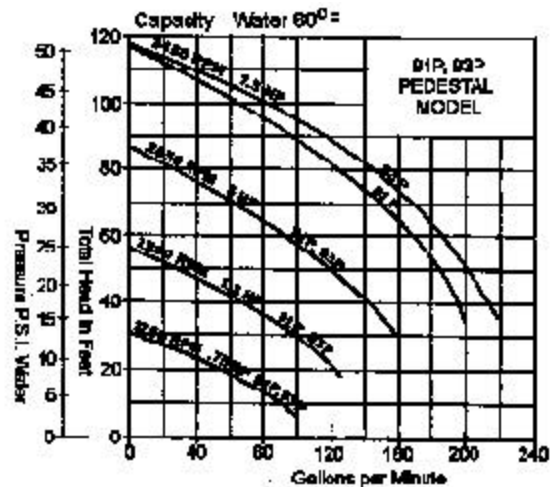
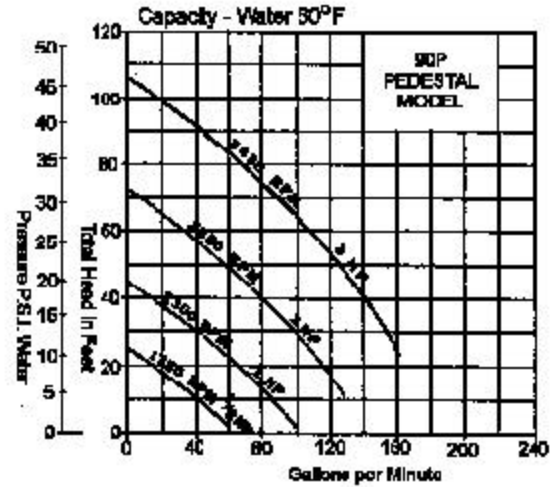
### SPECIAL MODEL DESIGNATIONS

n To specify seal made of Viton(R) & rubber parts of Viton, add -10 to basic pump numbers. (Example 90P-10). Typical applications include solvents and chemicals.

n To specify seal made of Viton(R) & rubber parts of EPDM, add -12 to basic pump numbers. (Example 90P-12). Typical applications include agricultural chemicals.

n To specify rubber Volute liner, add -13 to basic pump numbers (Example 90P-13). Typical applications include dirty liquids.

Note: Viton(R) is a registered trademark of DuPont Dow Elastomers.



For speed below 3450 RPM, single curves are shown because flow differences are not significant.

### FEATURES

- n Tough, lightweight, thermoplastic polyester housings and impellers for chemical and wear resistance.
- n Excellent corrosion resistance to water, acids and most organic solvents - liquids normally requiring expensive pump liners or stainless steel construction.
- n Quiet, efficient, long life.
- n Self priming to 25 feet suction lift in approximately 1 minute depending on pump R.P.M. and altitude.
- n Stainless steel fasteners.
- n Mechanical seals with ceramic wearface mating with lapped carbon.
- n Standard seal elastomer material is Buna - also available in Viton® - also available in EPDM.
- n Rubber Volute liner is available for dirty liquids.
- n Built in check valve prevents back flow when pump is shut down.

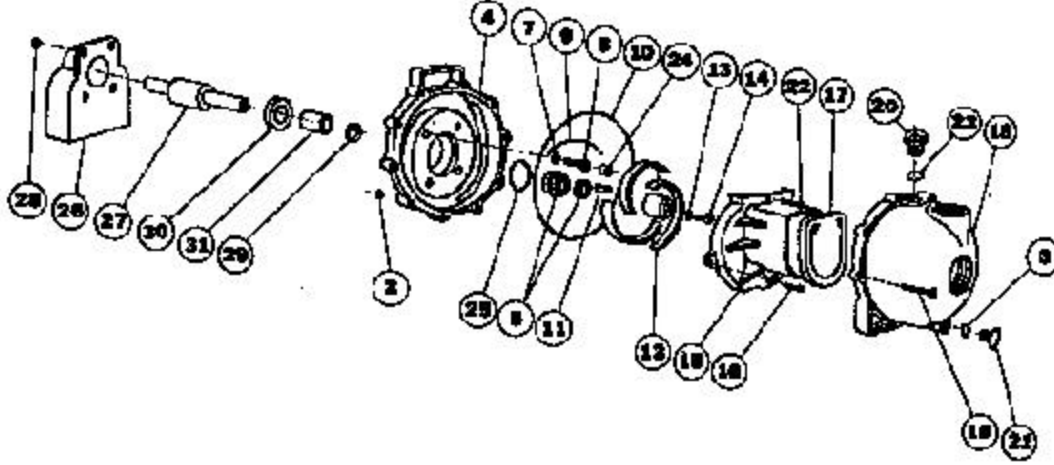
**MODELS**  
90P 93P  
91P

# OBERDORFER

## THERMOPLASTIC SELF PRIMING CENTRIFUGAL PUMPS



### EXPLODED VIEW AND PARTS LIST

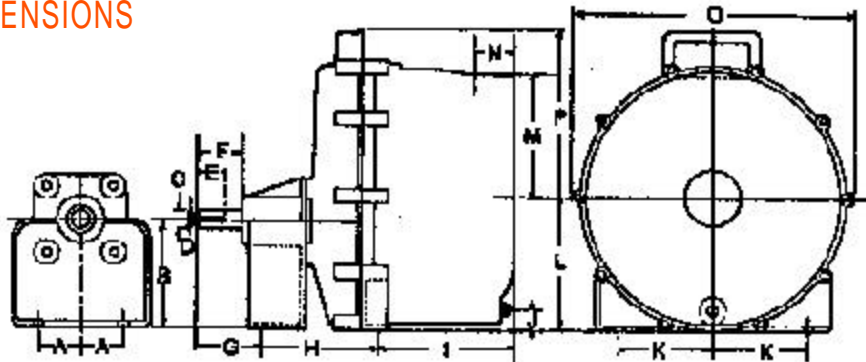


Repair Kit No.	Pump No.	2	3	4	5	7	8	9	10	11	12	13	14	15	16
		Hex Nut	O-Ring	Bracket	Seal Assy.	O-Ring	Screw	O-Ring Segment	O-Ring	Key	Impeller	O-Ring	Screw	Volute	Screw
		10 Req'd	1 Req'd	1 Req'd	1 Req'd	4 Req'd	4 Req'd	1 Req'd	1 Req'd	1 Req'd	1 Req'd	1 Req'd	1 Req'd	1 Req'd	2 Req'd
024-704	90P	721-00	1009-71	703-30	714-11	717-71	728-10	754-71	719-71	718-00	704-30	717-71	716-10	702-30	725-10
024-706	91P	721-00	1009-71	703-30	714-11	717-71	728-10	754-71	719-71	718-00	704-30	717-71	716-10	702-30	725-10
024-706	93P	721-00	1009-71	703-30	714-11	717-71	728-10	754-71	719-71	718-00	704-30	717-71	716-10	702-30	725-10

Pump No.	17	18	19	20	21	22	23	24	25	26	27	28	29	30	31
	Check Valve	Body	Screw	Filler Plug	Drain Plug	Volute Screw	O-Ring	Screw Plug	O-Ring	Bearing Pedestal	Bearing Assy.	Hex Nut	Shim	Slinger	Shaft Sleeve
	1 Req'd	1 Req'd	10 Req'd	1 Req'd	1 Req'd	1 Req'd	1 Req'd	4 Req'd	1 Req'd	1 Req'd	1 Req'd	4 Req'd	As Req'd	1 Req'd	1 Req'd
90P	705-71	1002-30	720-00	722-30	723-30	771-10	765-71	750-40	976-71	759-20	777-00	745-00	778-11	884-71	882-90
91P	705-71	1002-30	720-00	722-30	723-30	771-10	765-71	750-40	976-71	759-20	777-00	745-00	778-11	884-71	882-90
93P	705-71	1002-30	720-00	722-30	723-30	771-10	765-71	750-40	976-71	759-20	777-00	745-00	778-11	884-71	882-90

Note: Repair Kit includes 3, 5, 7, 9, 11, 12, 13, 14, 16, 22, 23, 25, & 29

### DIMENSIONS



Pump No.	Suction & Discharge	A	B	C	D	E	F	G	H	I	J	K	L	M	N	O	P
90P	2"NPT	1.6	4.17	0.75	0.188	1	1.8	2.5	4.6	5.3	0.8	3.7	5.17	4.7	1.5	11	6.5
91P	2" NPT	1.6	4.17	0.75	0.188	1	1.8	2.5	4.6	5.3	0.8	3.7	5.17	4.7	1.5	11	6.5
93P	3" NPT	1.6	4.17	0.75	0.188	1	1.8	2.5	4.6	7.8	0.8	3.7	5.17	4.45	1.95	11	6.5

7/00

Specifications are subject to change without notice.