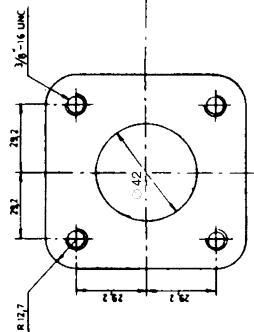
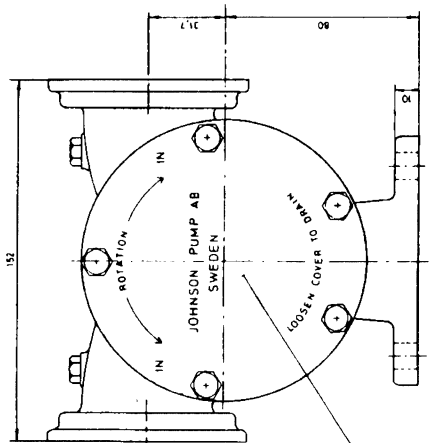
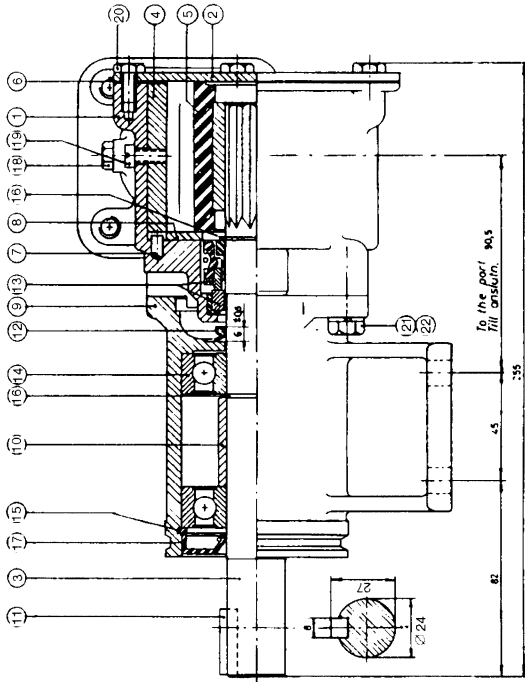
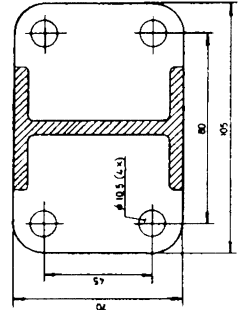


Multipurpose



Pump och Pumplockets stämpels på locket



22	4	Washer	Bricka	05-02-101
21	4	Screw	Skriv	05-04-128
20	5	Screw	Skriv	05-04-46
19	1	Screw	Skriv	See table
18	2	Plug	Plugg	05-03-122
17	1	Lip seal	Läpptätning	05-29-118
16	2	Retaining ring	Låsring	05-34-108
15	1	Retaining ring	Låsring	05-34-118
14	2	Ball bearing	Kullager	05-08-504
13	1	Mech. seal	Mek. tätning	05-20-118
12	1	V-ring	V-ring	05-03-124
11	1	Key	Kil	05-19-505
10	1	Spacer	Distans	01-42747
9	1	Pedestal	Lagerrot	01-13020
8	1	Wear plate	Slitbricka	01-42423
7	1	Pin	Stift	01-42426
6	1	Gasket	Packning	01-42424
5	1	Impeller	Impeller	See table
4	1	Cam	Kam	See table
3	1	Shaft	Åxel	01-35137
2	1	End cover	Lock	01-42422-1
1	1	Body	Pumphus	01-11206
Pos.	Qty.	Description	Material Dimension	Drawing nr.

PUMP NO	PUMPTYP	RUBBER QUAL.	IMPELLER		CAM		CAM	MAM	NO	DESCRIPTION	NO	SCREW	SCREW
			QUAL.	NO	DESCRIPTION	NO							
10-1302-1	F8B-3000	NITRILE	00-0785	1/2	01-4280	05-00-08	10						
10-1302-2	F8B-3000	NITRILE	00-0785	1/2	01-4285	05-00-08	10						
10-1302-3	F8B-3000	NITRILE	00-0785	1/2	01-4285	05-00-08	10						
10-1302-4	F8B-3000	NITRILE	00-0785-3	1/2	01-4276	05-00-141	10						

10-1302-1	1	10-1302-1	10-1302-1	10-1302-1
10-1302-2	1	10-1302-2	10-1302-2	10-1302-2
10-1302-3	1	10-1302-3	10-1302-3	10-1302-3
10-1302-4	1	10-1302-4	10-1302-4	10-1302-4

Johnson Impellerpump  
Type F8B-3000 · 10-13024