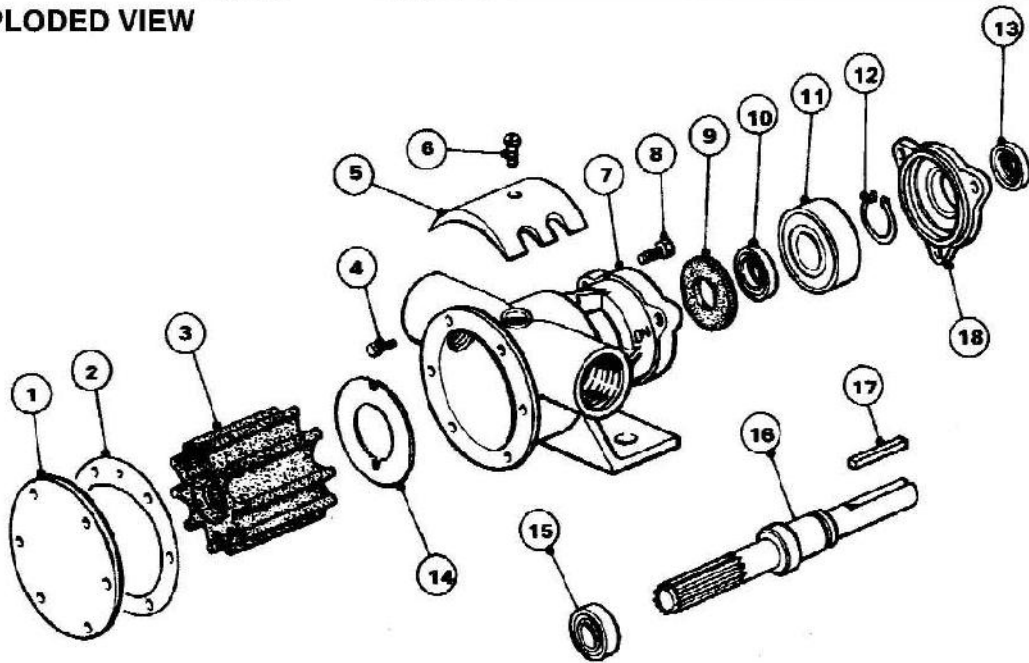


EXPLODED VIEW



PARTS LIST MODEL 52080-2001

Key	Description	Qty	Part No	Key	Description	Qty	Part No
1	Endcover	1	3983	10	Inner Bearing Seal	1	SP2700-48
2	Gasket*	1	890	11	Bearing	1	SP2800-36
3	Impeller*	1	17937-0001B	12	Retaining Ring	1	SP1700-247
4	Endcover Screw*	6	X3001-147F	13	Outer Bearing Seal	1	SP2700-1027
5	Cam	1	934	14	Wearplate	1	4156
6	Cam Screw	1	SP1004-09	15	Seal*	1	SP2700-1027
7	Body	1	50084-2100	16	Shaft	1	52087-0000
8	Screw	3	X3003-176F	17	Key	1	X4006-208A
9	Slinger	1	3180	18	Outboard Seal Housing	1	52081-0000
					Spine Seal	1	4345

Service Kit No SK406-0001

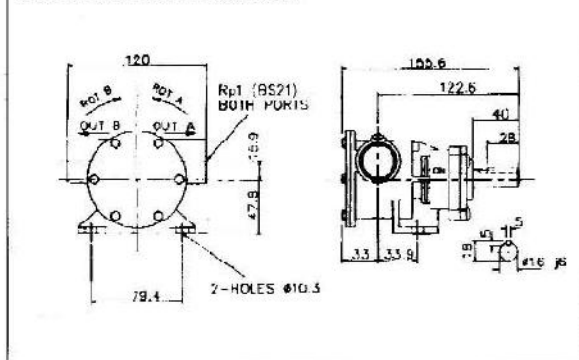
Contains Parts marked*

Options:-

High Pressure Neoprene Impeller
Nitrile Impeller
1/2 Cam
1/2 Cam Screw
2/3 Cam
2/3 Cam Screw

Part No 5915-0001B
Part No 17937-0003B
Part No 2431
Part No SP1004-10
Part No 3255
Part No SP1004-10

INSTALLATION DRAWING



SERVICE INSTRUCTIONS

Dis-Assembly Inspect all parts for wear or damage and replace if necessary

1. Remove endcover screws, endcover and gasket.
2. Remove impeller.
3. Loosen cam screw and remove cam, (clean off old jointing compound).
4. Remove wearplate.
5. Remove lip seal from body.
6. Remove fixing screws and outboard seal housing, together with seal.
7. Press shaft on impeller drive end to remove shaft and bearing from pump. Heating outside of body will ease dis-assembly.
8. Remove bearing retaining ring from shaft.
9. Supporting bearing inner race, press through bearing.
10. Remove inner bearing seal if it needs replacing.

Assembly

1. Lubricate inner bearing seal with grease and press into body bearing seal bore with lip facing away from bearing bore.
2. Press shaft into bearing, supporting inner race of bearing. Fit bearing retaining ring onto shaft.
3. Position slinger in body drain area. Insert splined end of shaft through bearing bore and guide slinger over shaft until bearing contacts body. Press on bearing outer race, install bearing into bore.
4. Fit new outer bearing seal in outboard seal housing and fit to pump, securing with retaining screws.
5. Lubricate OD and lip of seal, then push into place using care not to damage or cut seal lip. (Lip faces impeller bore).
6. Fit wearplate, aligning dimple in wearplate with slot in cam.
7. Coat cam screw threads, and top of cam with a nonsetting jointing compound. Install in body.
8. Lightly grease impeller bore and start impeller into bore with a rotary motion until splines engage, then push into bore.
9. Fit endcover and gasket and secure with endcover screw.