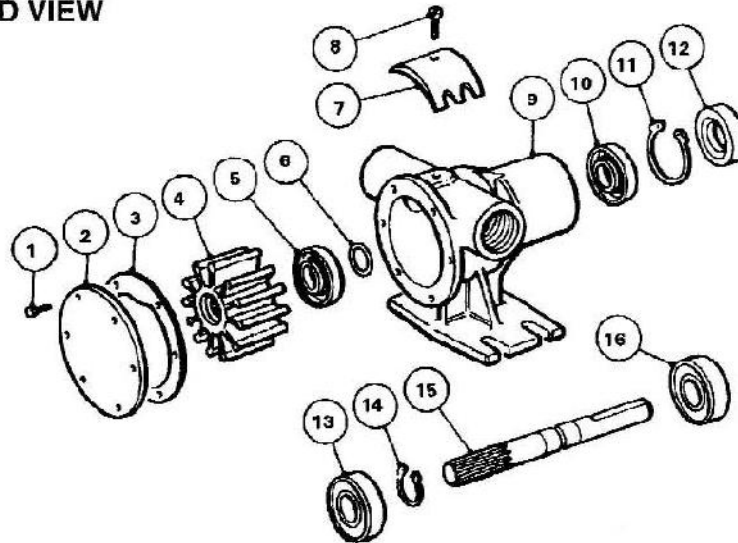


### EXPLODED VIEW



### PARTS LIST MODEL 52040-2001

Key	Description	Qty	Part No
1	Endcover Screw *	6	X3001-095F
2	Endcover	1	3992
3	Gasket *	1	3298
4	Impeller *	1	1210-0001B
5	Seal *	1	SP2700-1027
6	"O" Ring	1	X4020-215A
7	Cam	1	490
8	Cam Screw	1	SP1003-01
9	Body	1	52044-2000
10	Bearing Seal	1	SP2700-1027
11	Retaining Ring	1	SP1701-137
12	Bearing Seal	1	SP2701-1015
13	Bearing	1	SP2601-0451
14	Retaining Ring	1	X3085-017A
15	Shaft	1	52047-0000
16	Bearing	1	SP2601-0451
	Spline Seal	1	4345

#### Options:-

High Pressure Impeller	Part No 3085-0001E
Nitrile Impeller	Part No 1210-0003E
1/2 Cam	Part No 10336
1/2 Cam Screw	Part No SP1003-09

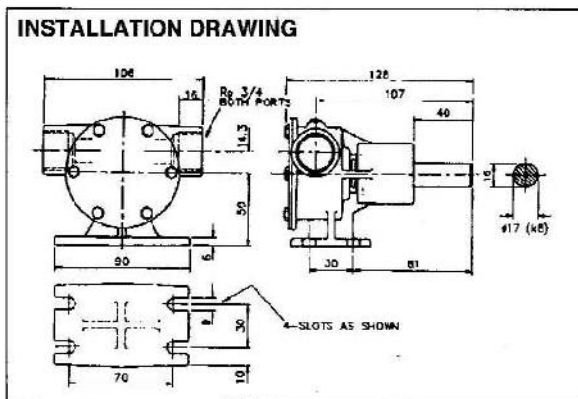
### SERVICE INSTRUCTIONS

**Dis-Assembly** Inspect all parts for wear or damage and replace if necessary

1. Remove endcover screws, endcover and gasket.
2. Remove impeller.
3. Loosen cam screw and remove cam. (clean off old jointing compound).
4. Remove lip seal from body.
5. Insert screwdriver between O.D. of outer bearing seal and pump bore and pry out seal.
6. Remove bearing retaining ring.
7. Press on impeller drive end of shaft to remove shaft and bearing assembly. Heating outside of body will ease dis-assembly.
8. Remove bearing to shaft retaining ring.
9. Supporting bearing inner race, press shaft through bearing.
10. Using extreme care not to mar body bore, insert screwdriver between O.D. of inner bearing seal and pump bore and pry out seal.

Service Kit No SK384-0101 Contains Parts marked\*

### INSTALLATION DRAWING



#### Assembly

1. Lubricate inner bearing seal with grease and press into body bearing seal bore with lip facing away from bearing bore.
2. Support shaft and press bearing onto shaft.
3. Install bearing to shaft retaining ring with flat side towards bearing.
4. Position slinger in body drain area. Insert splined end of shaft through bearing bore and guide slinger over shaft until bearing contacts body.
5. Press on bearing outer face, install bearing into bore.
6. Install bearing to body retaining ring in body groove with flat side towards bearing.
7. Lubricate outer bearing seal with grease and press into bearing bore until it is flush with the body (spring facing outwards).
8. Lubricate O.D. and lip of seal, then push into place, using care not to damage or cut seal lip, (lip faces impeller bore).
9. Coat cam screw threads, and top of cam with a non setting jointing compound and install in body with the cam screw.
10. Lightly grease impeller bore and start impeller into bore with a rotary motion until splines engage, then push into bore.
11. Install gasket and endcover, and secure with endcover screws.