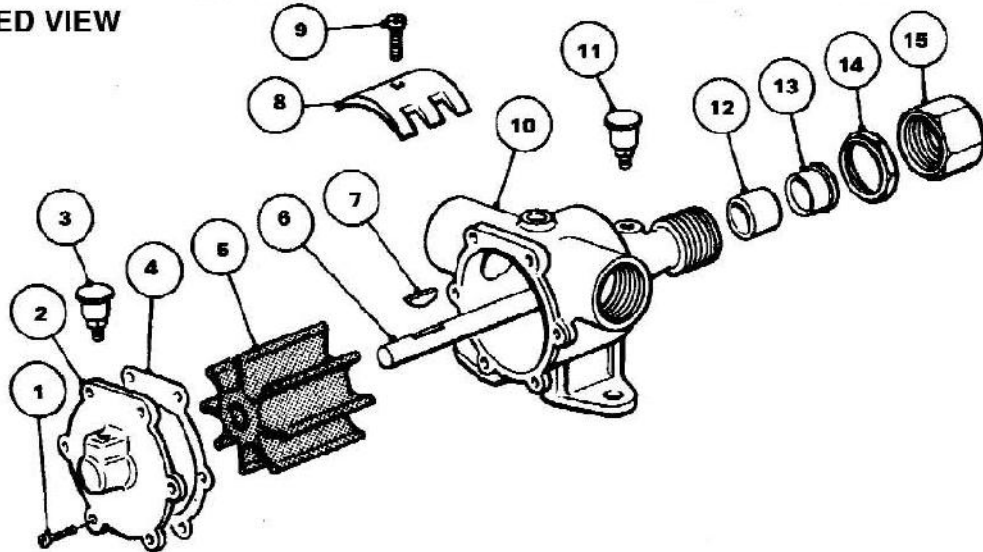


### EXPLODED VIEW



#### PARTS LIST 4900-200

Key	Description	Qty	Part No
1	Endcover Screws*	6	SP1003-09
2	Endcover	1	4905
3	Grease Cup	1	SP1503-01
4	Gasket*	1	4908
5	Impeller*	1	4568-0001B
6	Shaft	1	C10-01
7	Key	1	SP1402-01
8	Cam	1	490
9	Cam Screw	1	SP1003-07
10	Body	1	4904-200
11	Grease Cup	1	SP1503-01
12	Packing*	1	3791
13	Packing Gland	1	C20
14	Lock Nut	1	C13
15	Pack Nut	1	C15

#### PARTS LIST JD3/4-200

Key	Description	Qty	Part No
1	Endcover Screws*	5	SP1003-02
2	Endcover	1	D6 01 200
3	Grease Cup	1	SP1503-01
4	Gasket*	1	706 01
5	Impeller*	1	4598-0001B
6	Shaft	1	D10 01
7	Key	1	SP1402-01
8	Cam	1	934
9	Cam Screw	1	SP1004-01
10	Body	1	JD4-200
11	Grease Cup	1	SP1503-01
12	Packing*	1	3791
13	Packing Gland	1	C20
14	Lock Nut	1	C18
15	Pack Nut	1	C16

#### MODEL 4900-200

Service Kit No SK234  
Contains Parts marked \*

#### Options:-

Nitrilo Impeller Part No 4568-0003B  
1/2 Cam Part No 10336  
1/2 Cam Screw Part No SP1003-09

#### MODEL JD3/4-200

Service Kit No SK220  
Contains Parts marked \*

#### Options:-

Nitrilo Impeller Part No 4598-0003B  
1/2 Cam Part No 2431  
1/2 Cam Screw Part No SP1004-10  
2/3 Cam Part No 3255  
2/3 Cam Screw Part No SP1004-10

### SERVICE INSTRUCTIONS

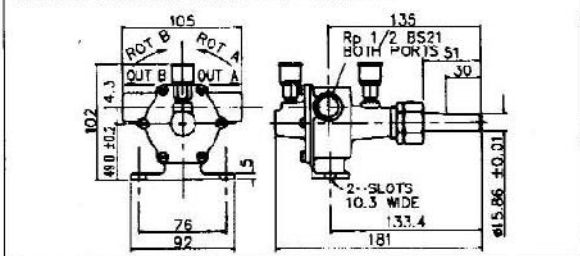
**Dis-Assembly** Inspect all parts for wear or damage and replace if necessary

1. Remove endcover screw, endcover and gasket.
2. Remove drive coupling or pulley and loosen packing nut.
3. Remove shaft and impeller assembly from body.
4. Remove impeller by sliding it off towards flatted end of shaft.
5. Loosen cam screw and remove cam, (clean off any old jointing compound).
6. Remove packing nut and gland.
7. Remove old packing with small screwdriver.

#### Assembly

1. Coat cam screw threads and top of cam with a non setting compound. Install in body.
2. Replace key in shaft and slide impeller onto the shaft from the flatted end.
3. Replace shaft and impeller assembly into body.  
Note: Lubricate impeller bore with a good quality pump grease and shaft with machine oil prior to placing in body.
4. Dip new packing in light machine oil and install packing, gland and nut.
5. Replace gasket, endcover and screw.
6. Replace pack nut onto shaft and "Hand Tighten" lock nut. Allow for slight leakage for a short time in order to lubricate the packing until it is "run-in". Re-adjust as necessary.  
**CAUTION: OVERTIGHTENING OF THE PACK NUT WILL INCREASE THE TORQUE REQUIREMENT AND MAY BURN THE PACKING OR GROOVE THE SHAFT UNDER THE PACKING.**

#### INSTALLATION DRAWING 4900-200



#### INSTALLATION DRAWING JD3/4-200

