

Models

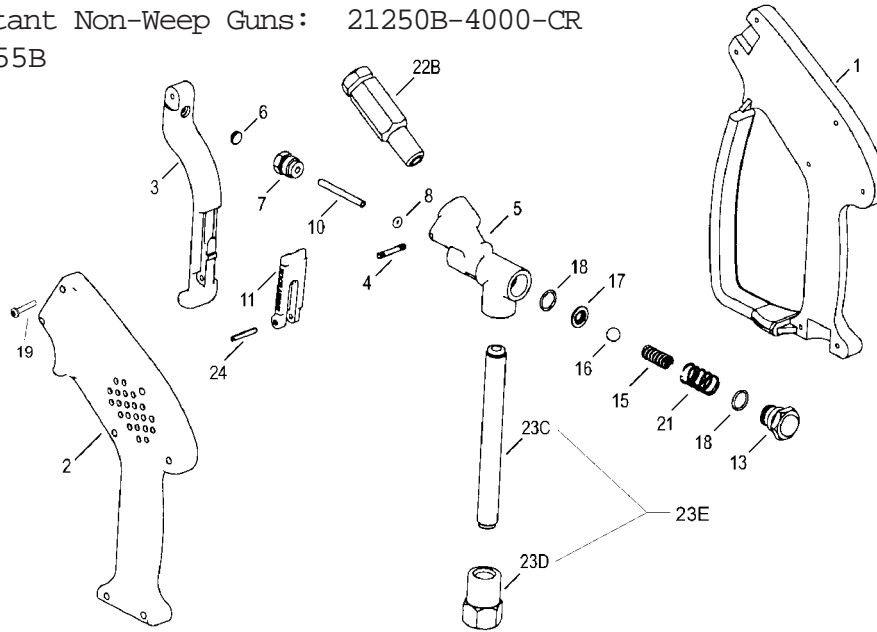
Shut-Off Guns

21250B Series, 21255B, 21280B

Non-Weep Guns: 21250B / 21280B

Corrosion Resistant Non-Weep Guns: 21250B-4000-CR

Weep Guns: 21255B



Note: Guns manufactured prior to 11-92 use cap #21208. When replacing this cap you must replace with cap #21432 and valve body #21430.

| ITEM # | PART # | DESCRIPTION | QTY |
|--------|------------|---|-----|
| 1 | 21271A | Housing, Right Half | 1 |
| 2 | 21272A | Housing, Left Half | 1 |
| 3 | 21273** | Trigger, 21250B, 21280 | 1 |
| 3 | 21012♦ | Trigger, 21255B | 1 |
| 4 | 21214 | Pin | 1 |
| 5 | 21430 | Valve Body | 1 |
| 6 | 21213**♦ | Cam, Trigger | 1 |
| 7 | 21211 | Guide Sleeve | 1 |
| *8 | 21210 | O-ring | 1 |
| *10 | 21209 | Control Bolt | 1 |
| 11 | 21274** | Lock, 21250B, 21280 | 1 |
| 11 | 21013♦ | Lock, 21255B | 1 |
| 13 | 21432 | Cap | 1 |
| *15 | 21431 | Valve Spring | 1 |
| *16 | 21205 | Valve Ball, 21250B, 21255B | 1 |
| *16 | 21357 | Valve Ball, 21250B - 4000 - CR | 1 |
| *16 | 21812 | Valve Ball, 21280 | 1 |
| *17 | 21218 | Valve Seat, 21250B, 21280 | 1 |
| *17 | 21237 | Valve Seat, 21255B | 1 |
| *18 | 21217 | O-ring | 2 |
| 19 | 21254 | Self Tapping Screw | 7 |
| *21 | 21251 | Spring | 1 |
| 22B | 21256A | Discharge Tube/Fitting Assy. | 1 |
| 23C | 21331 | Inlet Tube | 1 |
| 23D | 21244 | Inlet Fitting | 1 |
| 23E | 21257+ | Inlet Tube Assembly (21250B, 21255B, 21280B) | 1 |
| 23E | 21257-4000 | Inlet Tube Assembly, 316 S.S. (21250B-4000 CR only) | 1 |
| 24 | 21236**♦ | Lock Pin | 1 |

21250B Kit # 21227* includes items #8, 10, 15-18, and 21
 21255B Kit # 21240* includes items #8, 10, 15-18, and 21
 21280B Kit # 21289* includes items #8, 10, 15-18, and 21
 21250B-4000-CR Kit# 21227-CR* includes items #8, 10, 15-18 and 21

+ You may order 23C & 23D as an assembly

** Sold as an assembly - p/n 21001

♦ Sold as an assembly - p/n 21001B

OPERATING CONDITIONS

Maximum Flow: 10 GPM
 Maximum Pressure:
 21250B, 21255B 5000 P.S.I.
 Maximum Pressure:
 21280B 1500 P.S.I.
 Maximum Temperature: 300 °F
 Inlet Port: 3/8" FNPT
 Outlet Port: 1/4" FNPT

INSTALLATION & OPERATING INSTRUCTIONS

DISASSEMBLY OF THE 21200 SERIES

- 1) Remove the seven self tapping screws (item #19) that secure the two halves of the housing together . Remove housings (items #1 and #2).
- 2) Drive out hinge pin (item #4) and remove trigger (item #3).
- 3) Remove the cap (item #13), springs (items #21 and #15), and ball (item #16).
- 4) Remove the guide sleeve (item #7), control bolt (item #10) and o-ring (item #8). Replace o-ring.
- 5) With a small dowel rod, drive-out the seats (#5) & o-ring (#18) from the guide sleeve part. Replace with new seat & o-ring.
- 6) Assemble in reverse order .

WARNING: DO NOT USE ACID CONCENTRATES THROUGH GUN

WARNING: NEVER SECURE THE SHUT-OFF GUN IN AN OPEN POSITION (TRIGGER PULLED BACK) BY MEANS OTHER THAN THE OPERATOR'S HAND, ETC. BODILY HARM MAY OCCUR IF THE OPERATOR LOSES CONTROL OF THE SHUT-OFF GUN.

CAUTION: ALWAYS ENGAGE TRIGGER LOCKING MECHANISM (ITEM #11) WHEN NOT IN USE.



Giant Industries, Inc.

900 N. Westwood Ave., P.O. Box 3187, Toledo, Ohio 43607

419-531-4600 Fax: 419-531-6836

www.giantpumps.com

© Copyright 2007 Giant Industries, Inc.

4/07 21250B.PMD